

Embryo biopsy troubleshooting

Re-BIOPSY

MC Magli, A. Pomante, AP Ferraretti, L. Gianaroli

S.I.S.Me.R. Reproductive Medicine Unit, Bologna, Italy

Bologna, May 8, 2016



www.iiarg.com

www.sismer.it



EMBRYO DEVELOPMENT AND BIOPSY



Re-biopsy?



NR 11.5%

1.5% PB1+2  
10% PB1 or 2

NR 6%

NR 6%

NR 3%

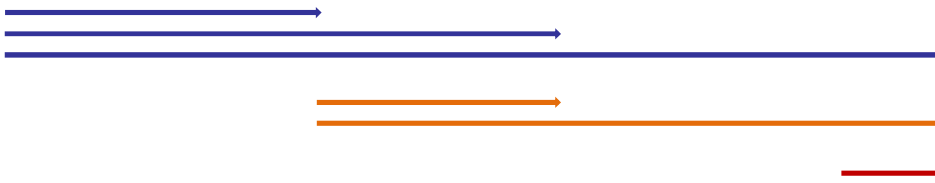


## Re-BIOPSY

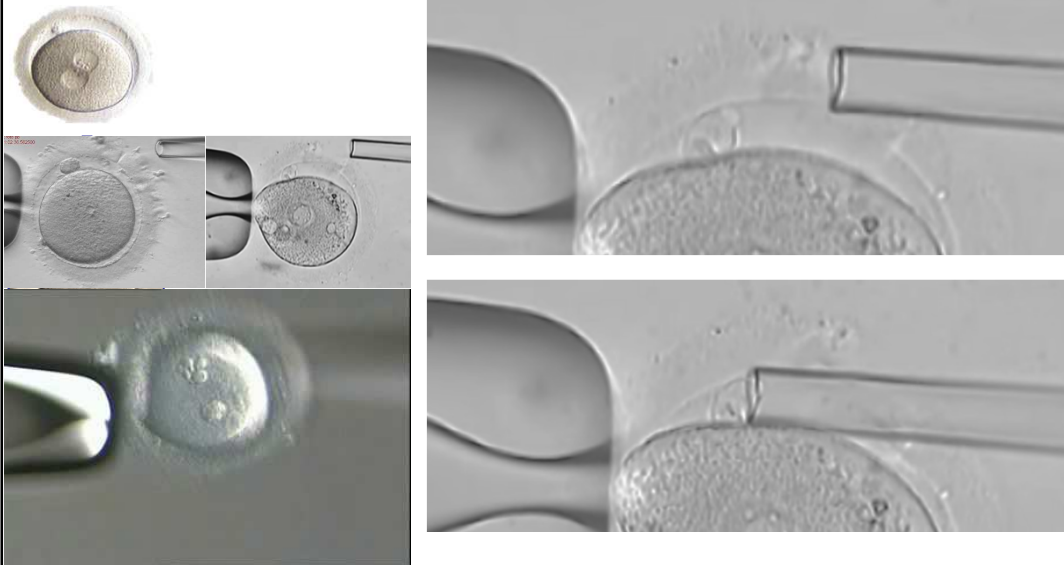


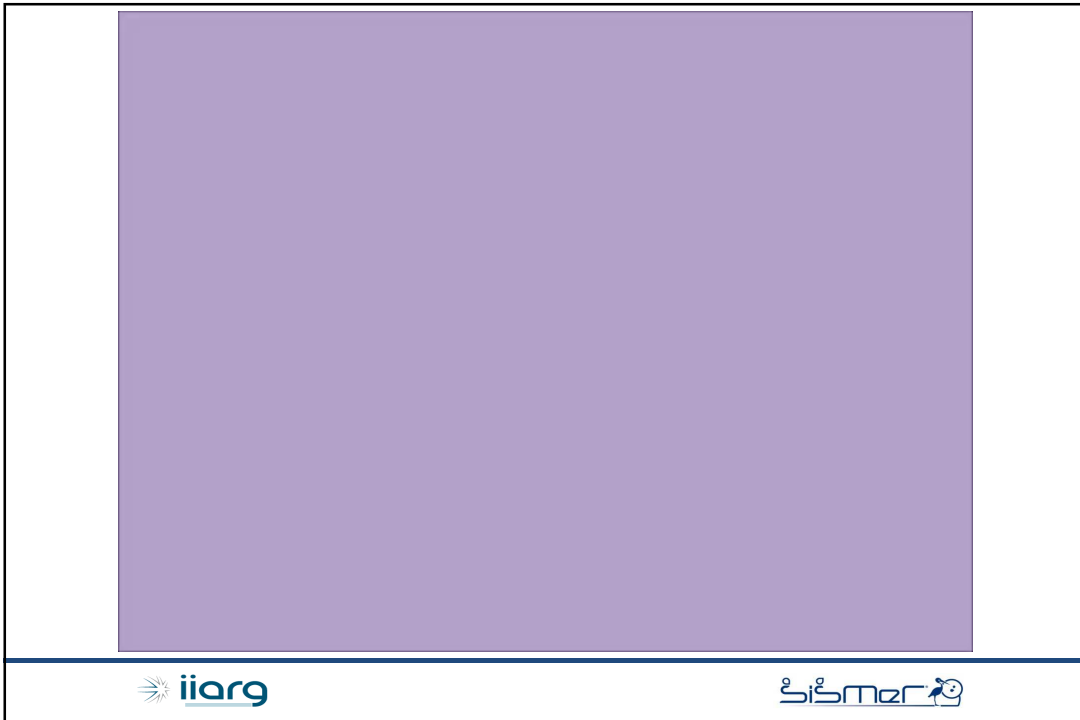
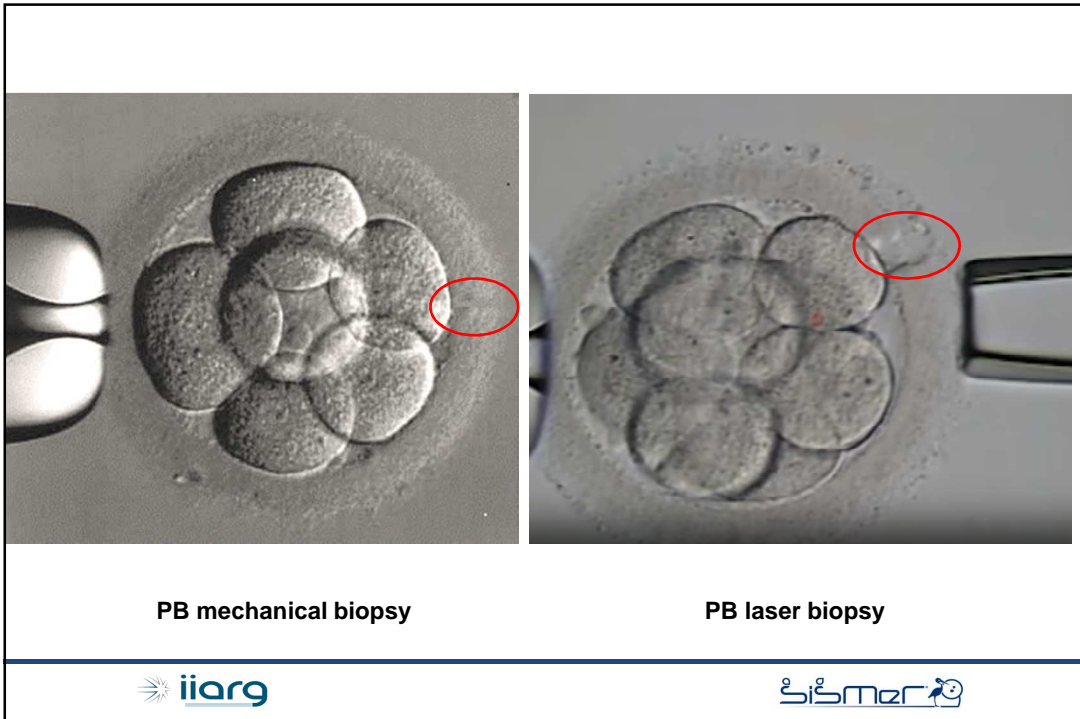
If embryos are still in culture, a decision depending on:

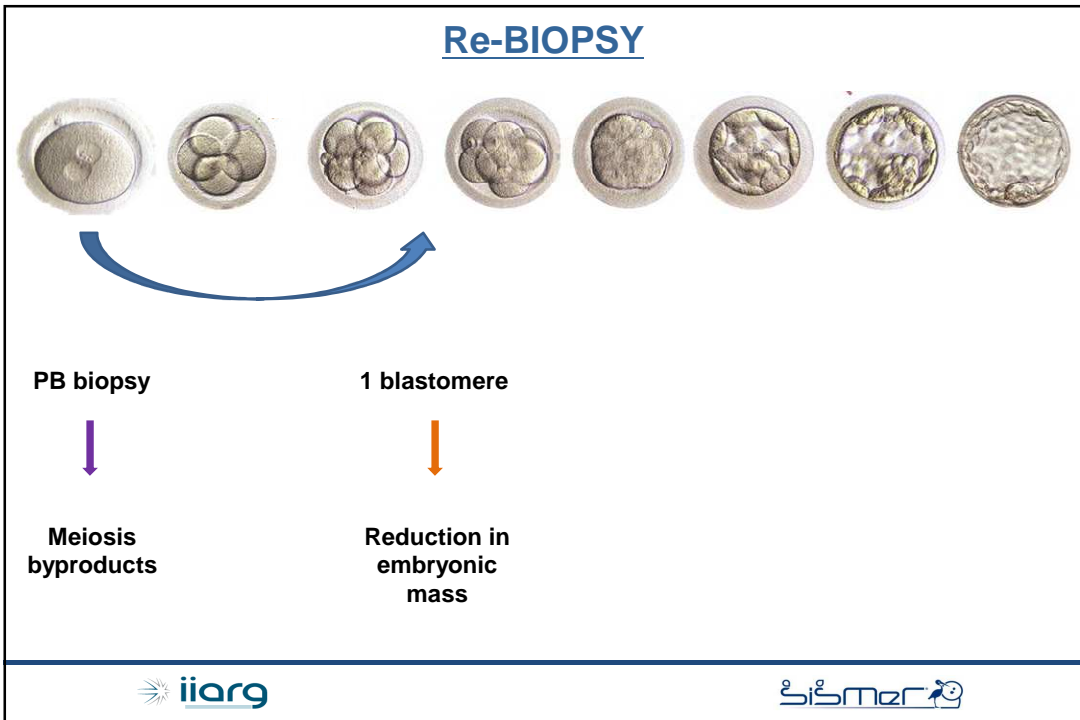
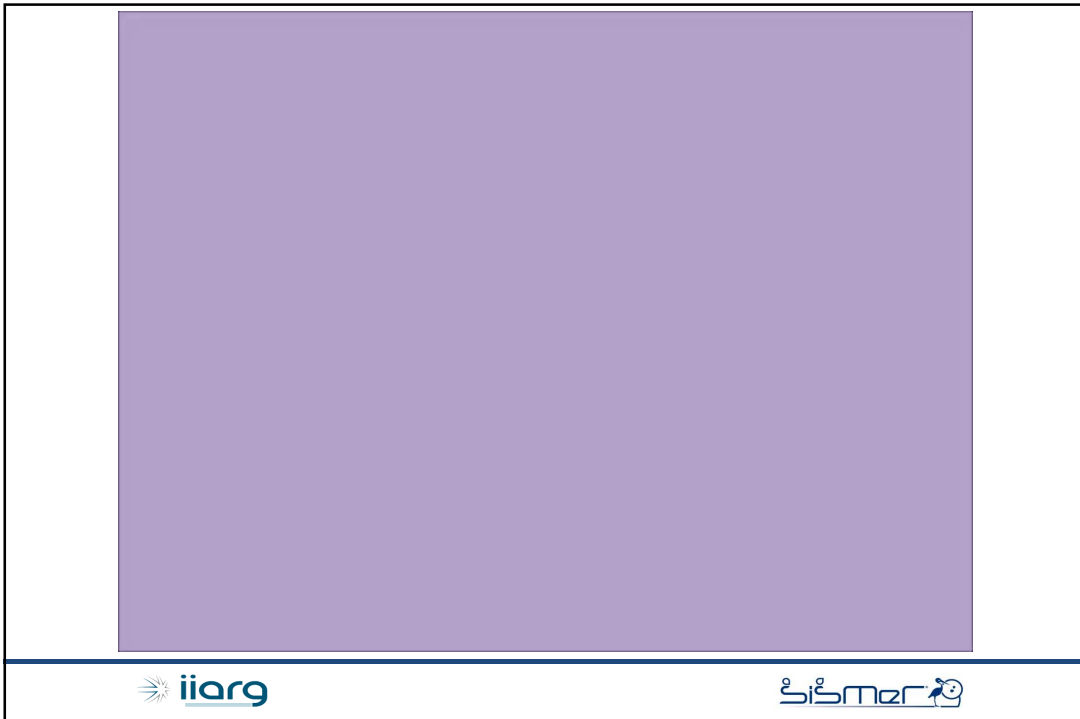
- Indication to PGD
- The stage at which biopsy was performed
- Embryo development at the time of re-biopsy

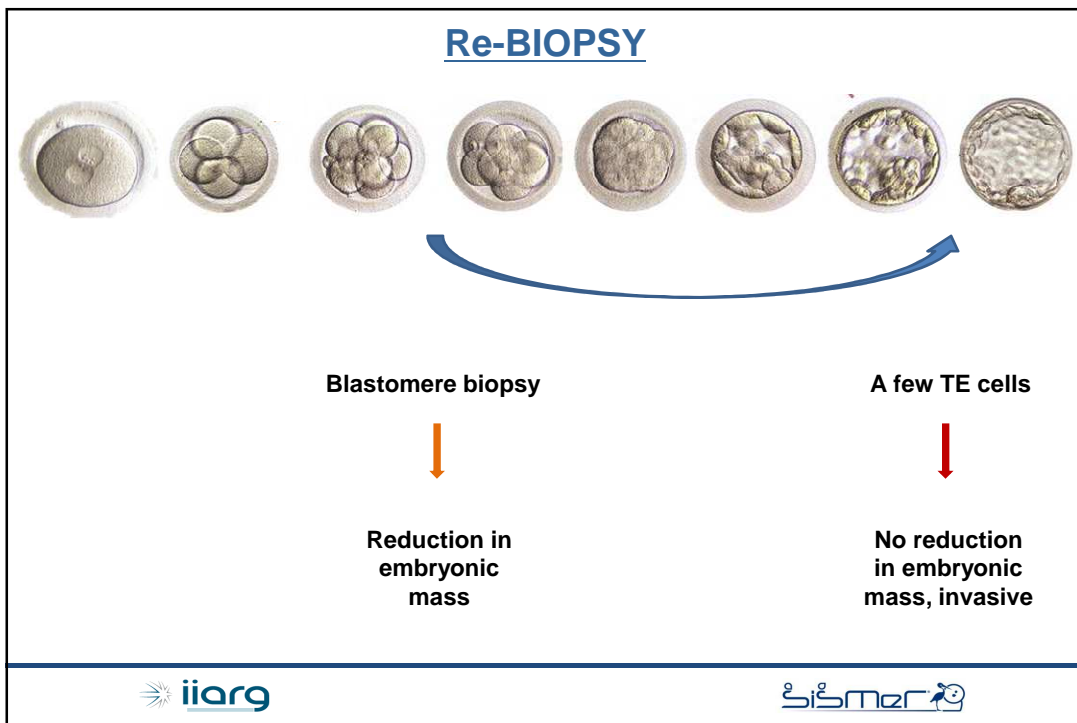
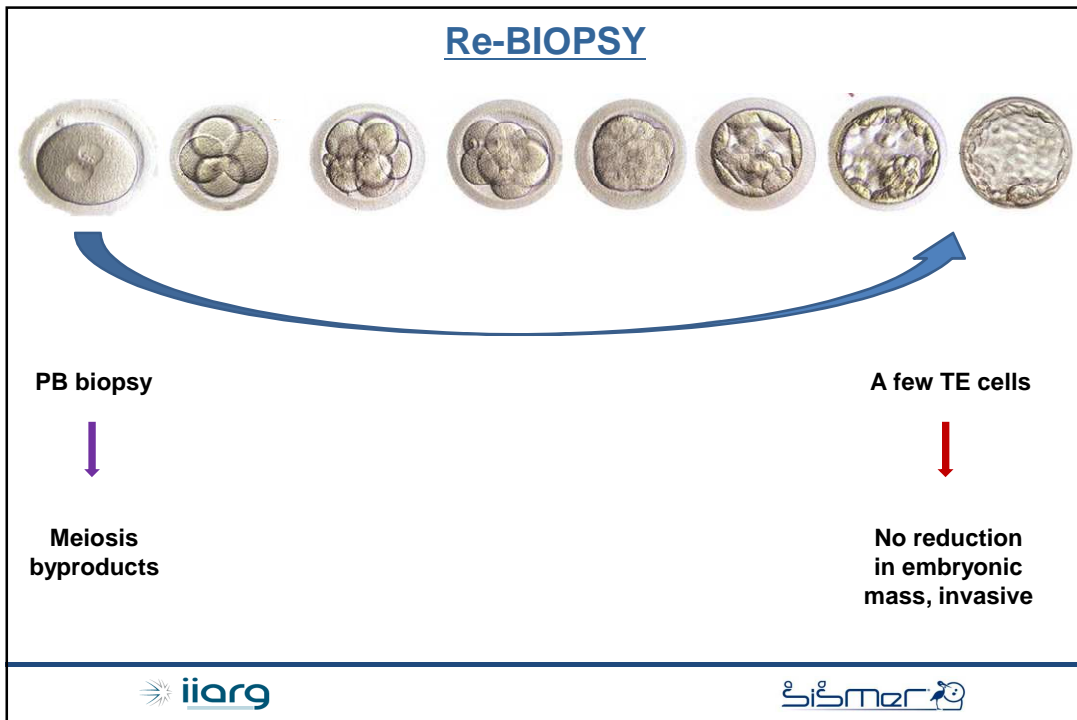


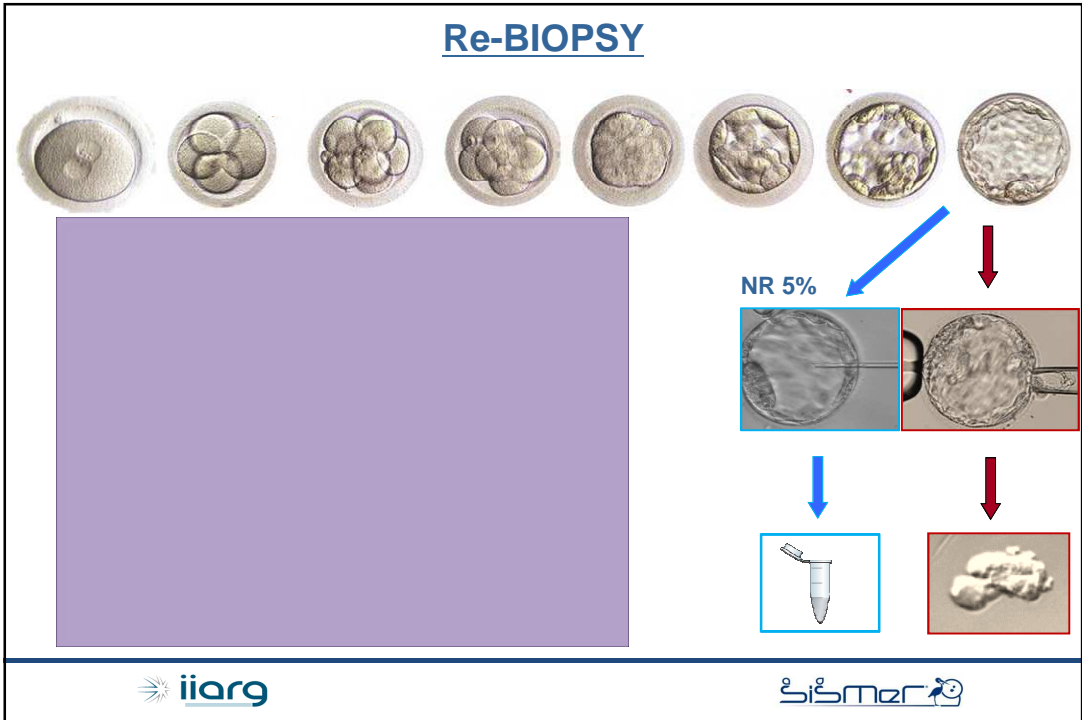
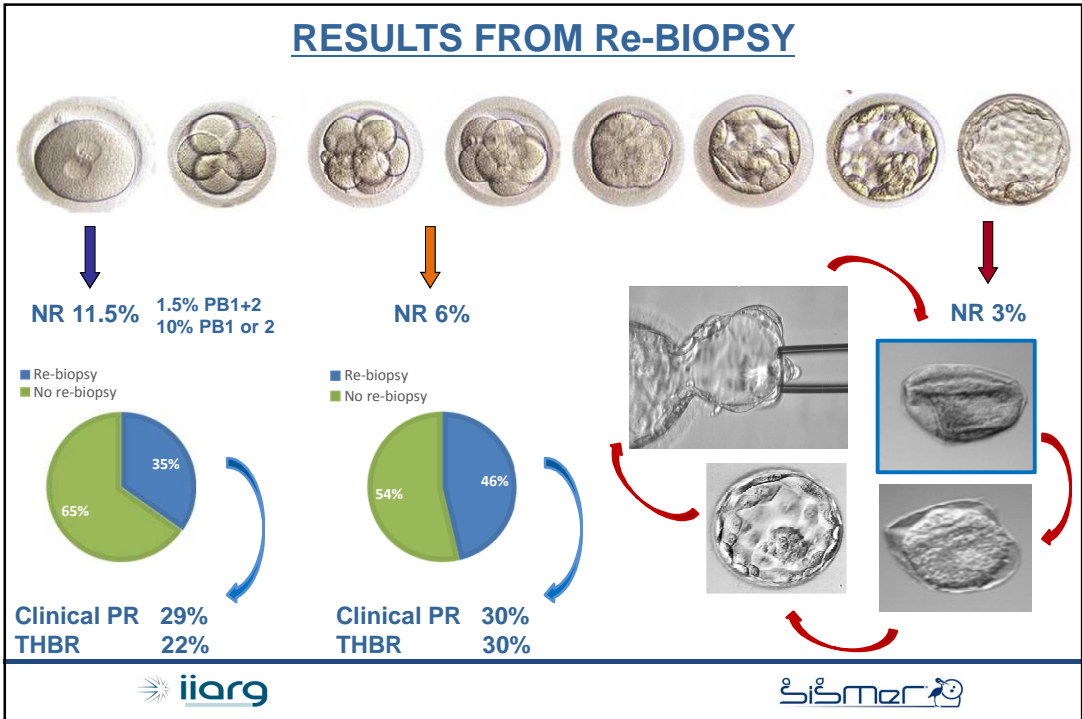
## EMBRYO DEVELOPMENT AND BIOPSY







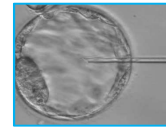




## RESULTS FROM BF Re-BIOPSY



NR 5%



## CONCLUSIONS

**In case of no informative result, re-biopsy can be performed at any stage**



**- Embryo morphology and development**

**- Type of biopsy and re-biopsy**

**→ Invasiveness**

**→ Reduction of embryonic mass**

**- Clinical outcome acceptable**

**→ Indication to PGD**

